



**WHERE ACCURACY
MEETS SIMPLICITY**

everlife
CPCDiagnostics
Enabling Better Outcomes



DYNACOUNT 5D PRO

Hematology Analyzer

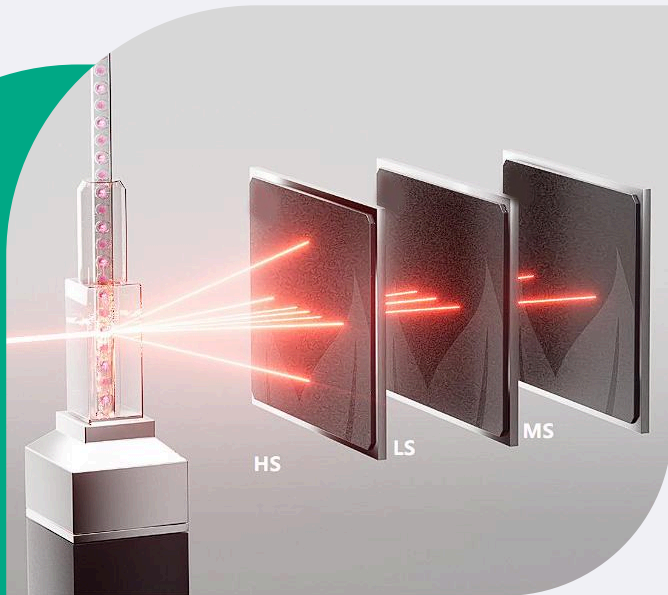
Think Pro, Get Pro

Features

- 12.1 inch touch screen - for easier operation
- User friendly intuitive software
- 8 Research parameters LIC#%, NRBC#%, ALY#%, NLR, PLR
- 3D Scattergram for better visibility and analysis
- 1,00,000 results storage capacity
- Efficient analysis with only 2 routine reagents

Technology

Flow cytometry + 3D Laser Scattergrams

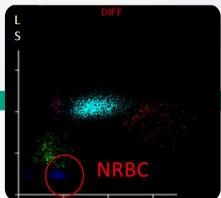


Advanced Flow Cytometry – Ensures precise cell differentiation

3D Scattergram – Provides detailed visualization using **Low, Middle, and High Scatter** for cell volume, complexity, and granularity

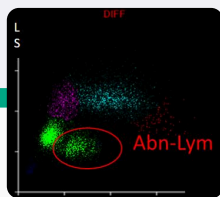
Enhanced Detection – Improves abnormal cell identification

Physiological & Morphological Flagging



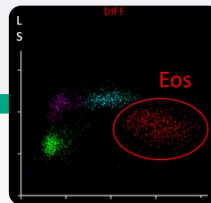
NRBC

NRBC presence flagging to remind to correct WBC count by smear



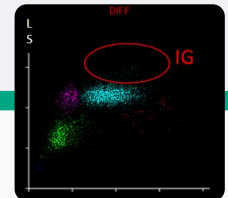
ALY

Atypical lymphocyte flagging indicative of autoimmune or malignant conditions



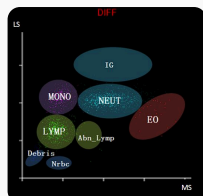
EOSINOPHILIA

High specificity on eosinophil
Great differentiation on eosinophilia samples



IG

IG presence flagging for assessment of sepsis and inflammation
Comprises of metamyelocytes, myelocytes & promyelocytes



DIFF

10 DIFF parameters
High clustering of 5-diff
Two 2D scattergrams for high sensitivity flagging

Specification

Throughput	60 samples per hour
Interface	12.1 inch touch screen
Parameters	25 reportable parameters WBC, Lym%, Mon%, Neu%, Bas%, Eos%, Lym#, Mon#, Neu#, Eos#, Bas#, RBC, HGB HCT, MCV, MCH, MCHC, RDW-CV, RDW-SD, PLT, MPV, PDW, PCT, P-LCR, P-LCC.
Research Parameters	8 (LIC%, LIC#, ALY%, ALY#, NRBC%, NRBC#, NLR, PLR)
Histograms	3 (WBC, RBC and PLT)
2D Scattergrams	4 (DIFF, BASO)
3D Scattergrams	1 (DIFF)
Reagent Consumption	Diluent 20L Lyse 500ml Cleaner 50ml
Sample Volume	Whole blood mode 16 µL Capillary whole blood mode 16 µL Pre-diluted mode 20 µL
Data Storage Capacity	100, 000 results including results and histograms
Temperature	15°C~32°C
Dimension	501 (D) x 320 (W) x 502.5 (H)
weight	29.3 kg

Performance

Parameter	Linearity range	Precision (CV %)
WBC	0-500 (10 ⁹ /L)	≤3.0% (3.50-7.00) ≤2.5% (7.01-15.00)
RBC	0-8.5 (10 ¹² /L)	≤1.5% (3.5-6.5)
HGB	0-250 (g/L)	≤1.5% (100-180)
PLT	0-400 (10 ⁹ /L)	≤5.0% (100-500)